



Hovingham & St Hilda's CE (VC) Primary Schools Federation



Pupil Home Learning

Date: 28/04/20

EYFS (Nursery/Reception - Miss Kirk) St Hilda's. sthildaseyfs@hshafed.co.uk

Acorn Class (Y1-2 - Miss Dunning) St Hilda's. acorn@hshafed.co.uk

Oak Class (Y3-6 - Mrs Dodds-Aston) St Hilda's. oak@hshafed.co.uk

Howard Class (Reception - Y2 Mrs Caddy & Mrs Atherton) Hovingham. howard@hshafed.co.uk

Worsley Class (Y3-6 - Mr Kelly) Hovingham. worsley@hshafed.co.uk

Week commencing 23/3/20: Daily PE with Joe Wicks visit - <https://www.youtube.com/watch?v=K6r99N3kXME> to find out more.

Joke of the day:

Q: What do you call a fish with no tail?

A: A one-eyed grape.



Send in your submissions for joke of the day! acorn@hshafed.co.uk

Daily Tasks

These tasks are to be completed each day please.

- Numbots (alternate days on Numbots and TT Rockstars for year 2)
<https://play.numbots.com/#/intro>
- Teach your Monster to Read
<https://www.teachyourmonstertoread.com/>
- Read (either to a grown up or a grown up can share a story with you)
- Start a diary of activities that you are doing. Update your diary by writing a few sentences every day.
- Spellings (weekly spellings will be on each powerpoint)

Spellings for this week

Year 1 :

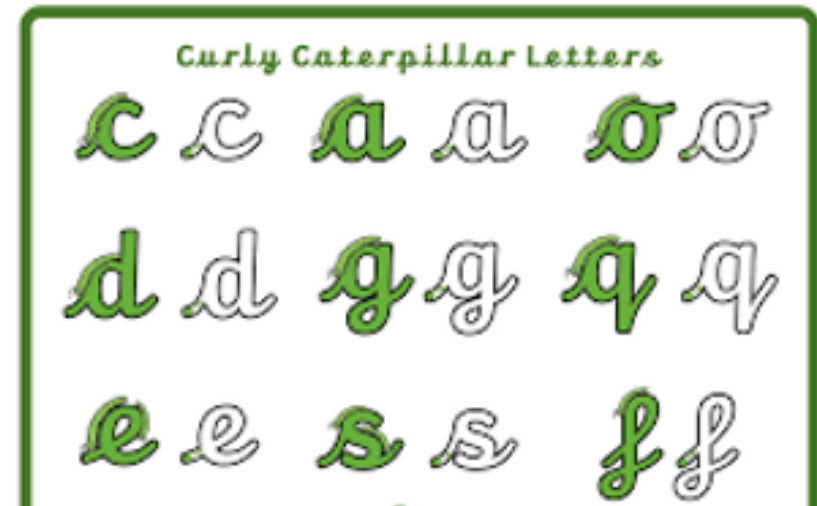
very
happy
funny
party
family
dizzy
smelly
silly
jolly
sunny

Year 2 :

badly
hopeless
penniless
happily
lovely
joyless
slowly
quickly
careless
fearless

Handwriting

This week please practise your curly caterpillar letters:



Maths

Pirate Paraphernalia

Following Directions



This very messy pirate has left his stuff everywhere! Can you follow the directions and help him gather it all up?



Directions on the next slide!

Year 1

For each set of directions, start facing north from the dark blue square.

1. Forward 2, left 2, back 1 = _____

2. Right 2, forward 2, left 1, forward 1, right 1 = _____

3. Left 1, forward 2, left 1, forward 2, right 2 = _____

4. Left 2, forward 3, right 1, down 2 = _____

5. Forward 4, right 2, down 3, left 1 = _____

1. Forward 1, $\frac{1}{4}$ turn anticlockwise, forward 2 = _____

2. $\frac{1}{4}$ turn clockwise, forward 2, $\frac{1}{4}$ turn anticlockwise, forward 3 = _____

3. Forward 2, $\frac{1}{4}$ turn clockwise, forward 1, $\frac{1}{4}$ turn anticlockwise, forward 2 = _____

Year 2

For each set of directions, start facing north from the dark blue square.

1. Forward 1, $\frac{1}{4}$ turn anticlockwise, forward 2 = _____

2. $\frac{1}{4}$ turn clockwise, forward 2, $\frac{1}{4}$ turn anticlockwise, forward 3 = _____

3. Forward 2, $\frac{1}{4}$ turn clockwise, forward 1, $\frac{1}{4}$ turn anticlockwise, forward 2 = _____

4. Forward 3, $\frac{1}{4}$ turn anticlockwise, forward 1, $\frac{1}{4}$ turn clockwise, back 2 = _____

5. $\frac{1}{4}$ turn clockwise, forward 3, $\frac{3}{4}$ turn anticlockwise, back 1, $\frac{1}{4}$ turn clockwise, forward 2 = _____

6. $\frac{3}{4}$ turn anticlockwise, forward 3 = _____

7. Forward 2, $\frac{3}{4}$ turn anticlockwise, forward 3 = _____

8. $\frac{3}{4}$ turn anticlockwise, back 1, $\frac{1}{4}$ turn anticlockwise, forward 4, $\frac{1}{4}$ turn anticlockwise, forward 1 = _____

Year 1 Phonics

Warm up: <https://www.phonicsplay.co.uk/member-only/Flashcards.html> (practise phase 3 and phase 5)

We already know the 'ea' sound. Practise reading these words:

bead meat peach sea leaf

Sometimes the 'ea' can make an 'e' sound. Practise reading this words where the 'ea' makes an 'e'.

head bread ready breakfast feather

Use these words to write sentences.

Read this sentence:

She has feathers on her headdress.

Year 2 Phonics

Recap: read these words treasure pleasure television

Today we are going to be looking at words that use the 'tion' spelling pattern. The 'tion' makes a 'shun' sound. Practise reading these words:

station mention position information invitation

Use these words to write some sentences.

Read this sentence:

The train is waiting at the station.

Literacy

Here is a sentence about Farmer Dan.

Farmer Dan walked over to the gate.

This isn't a very interesting sentence, it doesn't give us very much detail!

We could make this better by adding some **adverbs** (describes how you're doing something) and **adjectives** (describes a noun). Like this:

Farmer Dan walked **joyfully over to the **old, broken** gate.**

That's better! Now it's your turn! There are some sentences on the next page. Use each one to write a new, more exciting sentence by adding adverbs and adjectives.

- 1) The birds laughed.
- 2) “What are you doing in the mud?” asked Stan.
- 3) Rags the dog ran around the fields.
- 4) The sun shone over Sunnybank farm.
- 5) Farmer Dan drove his tractor to the field.

Geography - Tuesday

- Click on the following link to watch a video clip of Kenya. (It is around 4 minutes long).
<https://www.bbc.co.uk/bitesize/clips/zrsgkqt>
- Can you now have a go at answering the questions below, some of the information was in the video you just watched, some you might have to research for yourself.
 - What is the weather like in Kenya?
 - Why is the weather like this?
 - What do we know about the weather in the UK?
 - What special foods are eaten in Kenya?
 - What is school like in Kenya?
 - How might going to school in Kenya be different or similar to going to school in the UK?

Kenya Fact File

FACTS



Fun facts about Kenya:

Continent:

Capital city:

Other main cities:

Rivers:

Mountains:

Animals:

Money used (currency):

Countries which border (meet) Kenya:

Other facts I have found out:

Please have a go at completing a Kenya Fact File (you should be able to download and print the template from our website or alternatively you can simply copy out the 'Fun Facts about Kenya:' section and answer them on paper.

Don't forget, you can send me a picture to Miss Kirk when you have finished

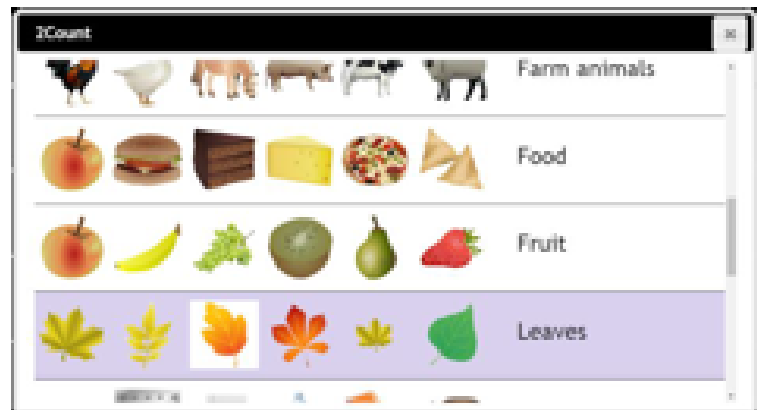
sthildaseyfs@hshafed.co.uk

ICT - Tuesday

You will need you login details for PurpleMash!

Today we are going to continue with making pictograms. Login to Purple Mash. Click on 'Tools' and then '2count'.

- Click on the top left menu and choose 'New'. Then select the 'Fruit' file from the list of options.
- You can change the fruit pictures from the default values by clicking on the fruit images at the bottom of the pictogram. Use alternatives from the clipart gallery or draw using the paint tools; this will make it easier for pupils to replicate.



- Can you make a pictogram using the following information?
- 3 apples, 4 oranges, 2 bananas, 6 grapes, 2 watermelon and 7 strawberries?
 - **DON'T FORGET TO SAVE YOUR WORK SO THAT I CAN SEE WHAT YOU HAVE CREATED!!**

- Your pictogram should look something like this (they may be in a different order but that is ok!)



Can you answer the following questions;

- Which fruit is most popular?
- Which fruit is least popular?
- How many more strawberries are there than oranges?
- How many more grapes are there than watermelon?