

Admissions Policy

We offer a very warm welcome both to children who start their school lives with us and to those who join us later in their primary education.

The Local Authority has responsibility for admitting children to individual schools. They ask parents to express a preference for the schools in which they wish their children to be educated. Wherever possible those preferences are met, unless to do so “would prejudice the provision of efficient education or the efficient use of resources” (Education Act 1996).

Our Published Admission Number (PAN) to the reception group is 7. Where this number is exceeded the priorities for admission are in accordance with North Yorkshire’s Admissions criteria:

ORDER OF PRIORITY	Notes:
<p><u>Priority Group 1:</u></p> <p>Children and young people in Public Care for whom the school has been expressed as a preference</p>	<p><i>This applies to all looked-after children, including those who are in the care of another local authority.</i></p>
<p><u>Priority Group 2:</u></p> <p>Children the Authority believes have special social or medical reasons for admission.</p>	<p><i>We will only consider in this category if they are supported by a recommendation from a doctor, social worker or other appropriate professional which sets out the particular reason(s) why the school in question is the most suitable school and the difficulties that would be caused if the child had to attend another school.</i></p>
<p><u>Priority Group 3:</u></p> <p>Children living within the normal area of the school.</p>	<p><i>Please see catchment map on page 3</i></p>
<p><u>Priority Group 4:</u></p> <p>Children living outside the normal area of the school.</p>	

Children in higher numbered priority groups will be offered places ahead of those in lower numbered priority groups. All applications within each priority group will be considered equally.

If there are not enough places for all the children in one of these priority groups, priority will be given firstly to those with a sibling at the school at the beginning of the year in question, and then to those living nearest the school. (All distance measurements are based on the nearest route recognized by the County Councils electronic mapping system from a child’s home address to school.)

Parents needing more details of these arrangements, including the right to appeal, should contact the Area Education Office.

Enquiries concerning Admissions, Transport, and Free School Meals should be made to the *Children and Young Peoples Services (CYPS)* in Harrogate:

CPYS, re Admissions- Transport or School Meals,
Jesmond House,
31-33 Victoria Avenue,
Harrogate,
HG1 5QE
Tel: 01609 533679

www.northyorks.gov.uk/admissions

At St. Hilda’s, Ampleforth Church of England VC Primary School children are admitted in September each year. Children whose fifth birthday falls between 1st September and the last day of August can start school at the beginning of the Autumn Term. However parents are not obliged to send their children to school until after their fifth birthday and can exercise this right, if they wish.

In order to make the transition from home to school as happy as possible, the children can start school on a part-time basis. For the first two weeks they can attend school for a half-session only each day, including lunchtimes. Children will attend both morning and afternoon sessions during this induction period, so that they can experience the full range of the curriculum. At the end of this two week induction period, children will normally start full-time education, unless the parents and staff feel that a further period of part-time education would benefit the child. If the children settle very quickly, parents and staff may decide that it is appropriate to shorten the induction period.

Children will be offered three afternoon visits, one of which will include a lunchtime visit, prior to starting school, so that they can experience the routine of main school life and have the opportunity to meet their class teacher and the other children in the school.

Nursery Class

Parents should be aware that attendance at our Nursery Class does not automatically guarantee a place in our reception class, and an application must be made to the Local Authority in the normal way, and the normal admissions criteria mentioned above will apply.

Provision for 3 and 4 Year Olds.

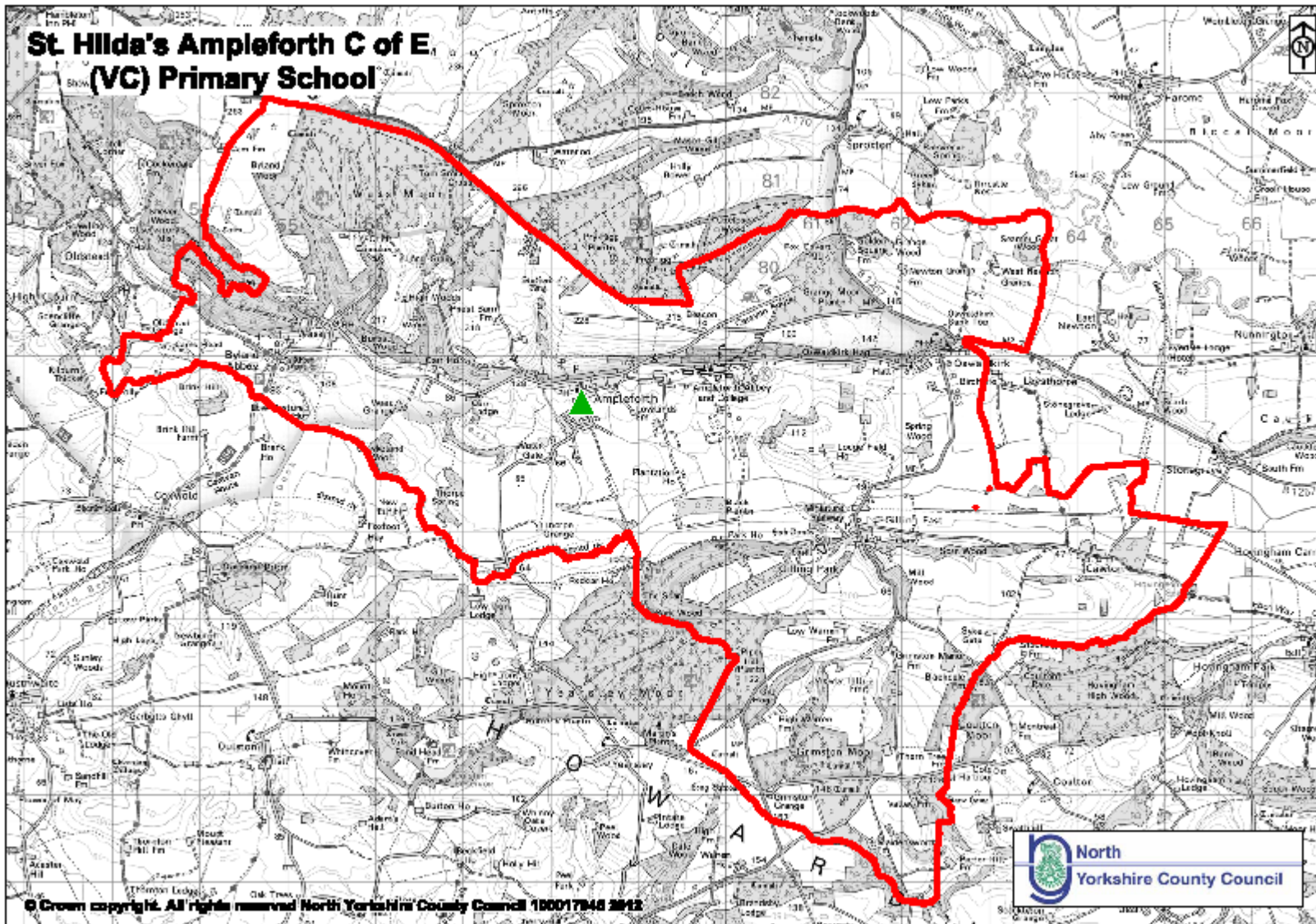
All 3 and 4 year olds are entitled to 15 hours per week of free Early Years Foundation Stage provision from the beginning of the school term following their third birthday until compulsory school age. This free entitlement can be taken up in maintained school nursery classes such as St Hilda’s and/or the private and voluntary sector in Ofsted registered provision.

If you would like us to consider your child for a school nursery place please register your interest with as soon as possible. Should places be over subscribed then the same admissions criteria will be applied as described above. Once a place has been given you will be asked to sign a Parental Agreement which will specify exactly when your child will attend Nursery. This will remain in force for at least a school term and possibly for the whole year.

Signed.....

Reviewed October 2015 (No changes made JP)
Date of next review: October 2016

St. Hilda's Ampleforth C of E (VC) Primary School



© Crown copyright. All rights reserved North Yorkshire County Council 100017948 2012



